

# Inhaltsverzeichnis

- Sovol SV06** ..... 1
- Kaufen** ..... 1
- Zusammenbau** ..... 1
- Upgrades** ..... 1
- Sonstiges** ..... 1
- Links ..... 1
- Specs ..... 1
- Mainboard ..... 2
- Anleitung ..... 2



# Sovol SV06

## Kaufen

- <https://smile.amazon.de/dp/B0BK89Z388>
- <https://sovol3d.com/products/sovol-sv06-direct-drive-3d-printer>

## Zusammenbau

- Nach Anleitung.
- Lager für X und Y austauschen und fetten.
- Lager für Z fetten.

## Upgrades

- Lager für X und Y

## Sonstiges

### Links

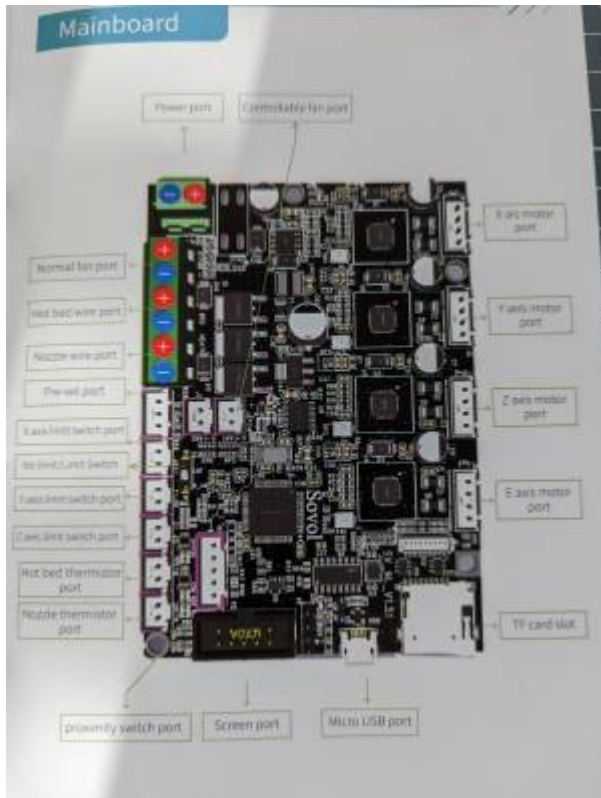
- <https://forum.drucktipps3d.de/forum/thread/21979-sv06-%C3%BCbersichtsthread-mods-anleitungen-etc/>
- <https://forum.drucktipps3d.de/forum/thread/20327-sv06/?postID=255197>

### Specs

- Model: SV06
- Interface Language: English
- Print Size: 220mm\*220mm\*250mm
- Build Plate Size: 235mm\*235mm
- Print Method: TF card, USB connection
- Layer Thickness: 0.1-0.4mm (Adjustable)
- Nozzle Diameter: Standard 0.4mm (Adjustable)
- Recommend Print Speed: ≤80mm/s
- Recommend Nozzle Temperature ≤260c (for beginners) ≤300c (for experienced people who wanna trying high temp material)
- Bed Temperature: ≤100c
- Material Diameter: 1.75mm
- Support File Format: G-code
- Machine Weight: 9 kg
- Machine Dimension: 496.94mm\*387.90mm\*610.91mm

- Package Size: 525mm\*540mm\*220mm
- Package Weight: 10.4kg
- Voltage: input 115v/230v50/6Hz, Output 24v
- Operation System: Windows/Mac/Linux

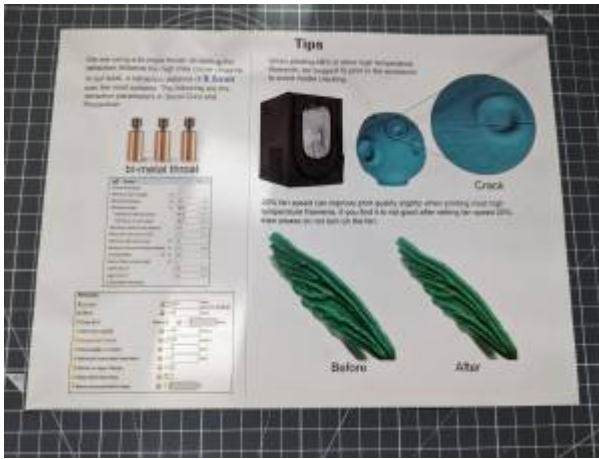
## Mainboard



## Anleitung

### Leveling Guide



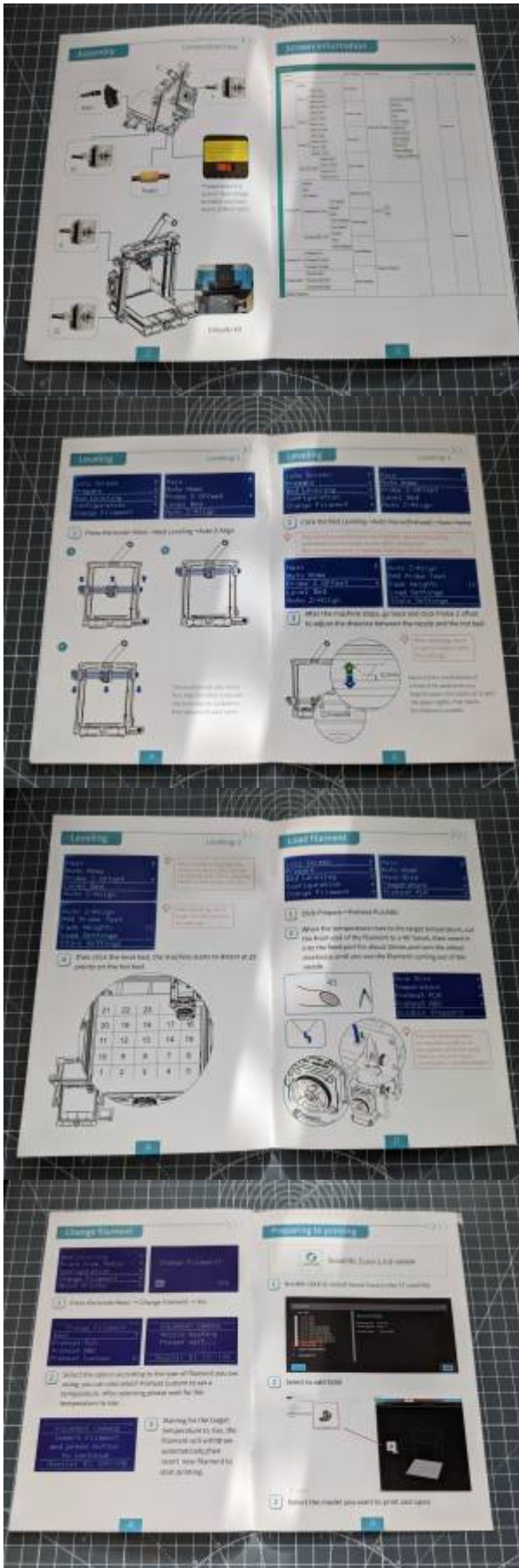


### Handbuch











From: <https://finest-plastics.cybercowboy.de/> - **Finest Plastics**

Permanent link: [https://finest-plastics.cybercowboy.de/doku.php?id=printer:sovol\\_sv06:sovol\\_sv06](https://finest-plastics.cybercowboy.de/doku.php?id=printer:sovol_sv06:sovol_sv06)

Last update: **2023/01/15 23:06**

