

Inhaltsverzeichnis

- Sovol SV06** 1
- Kaufen** 1
- Zusammenbau** 1
- Upgrades** 1
- Sonstiges** 1
- Links 1
- Specs 1
- Mainboard 2
- Anleitung 2

Sovol SV06

Kaufen

- <https://smile.amazon.de/dp/B0BK89Z388>
- <https://sovol3d.com/products/sovol-sv06-direct-drive-3d-printer>

Zusammenbau

- Nach Anleitung.
- Lager für X und Y austauschen und fetten.
- Lager für Z fetten.

Upgrades

Sonstiges

Links

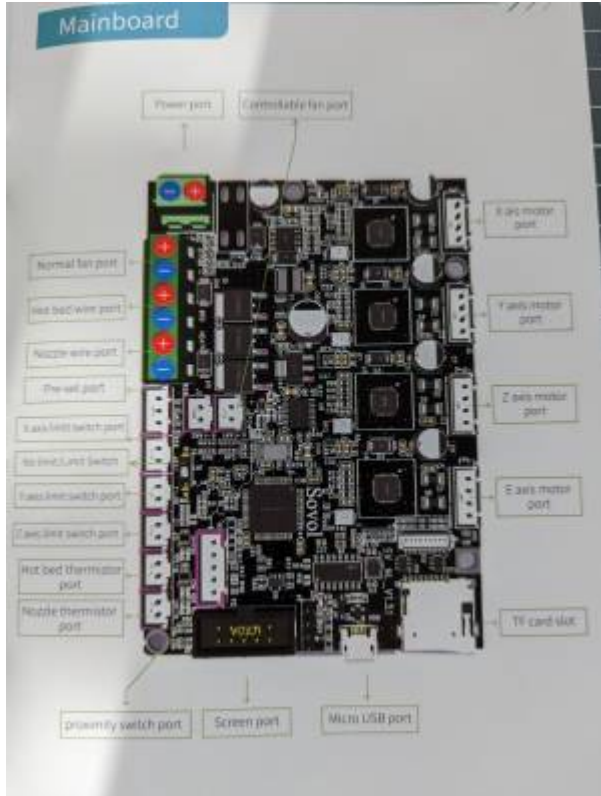
- <https://forum.drucktipps3d.de/forum/thread/21979-sv06-%C3%BCbersichtsthread-mods-anleitung-etc/>
- <https://forum.drucktipps3d.de/forum/thread/20327-sv06/?postID=255197>

Specs

- Model: SV06
- Interface Language: English
- Print Size: 220mm*220mm*250mm
- Build Plate Size: 235mm*235mm
- Print Method: TF card, USB connection
- Layer Thickness: 0.1-0.4mm (Adjustable)
- Nozzle Diameter: Standard 0.4mm (Adjustable)
- Recommend Print Speed: ≤80mm/s
- Recommend Nozzle Temperature ≤260c (for beginners) ≤300c (for experienced people who wanna trying high temp material)
- Bed Temperature: ≤100c
- Material Diameter: 1.75mm
- Support File Format: G-code
- Machine Weight: 9 kg
- Machine Dimension: 496.94mm*387.90mm*610.91mm
- Package Size: 525mm*540mm*220mm
- Package Weight: 10.4kg
- Voltage: input 115v/230v50/6Hz, Output 24v

- Operation System: Windows/Mac/Linux

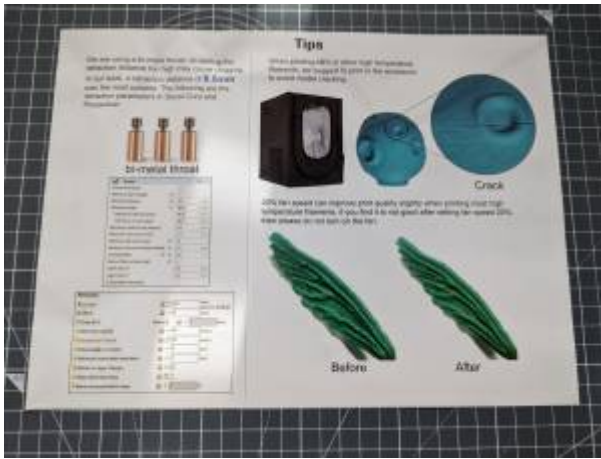
Mainboard



Anleitung

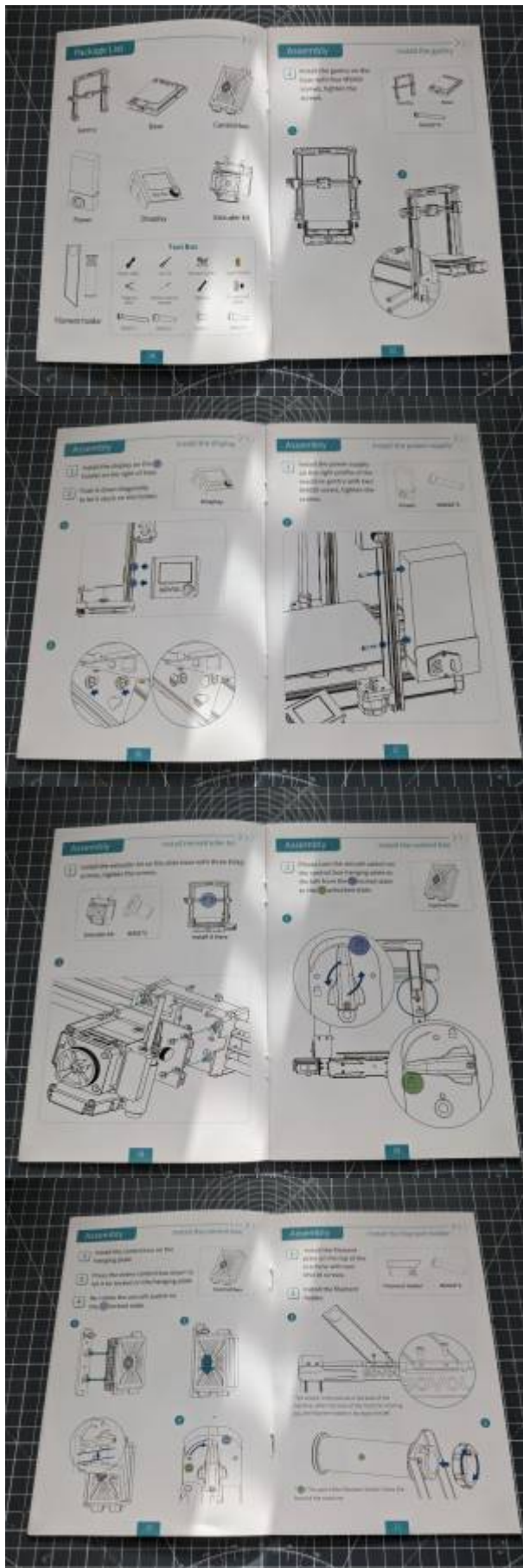
Leveling Guide

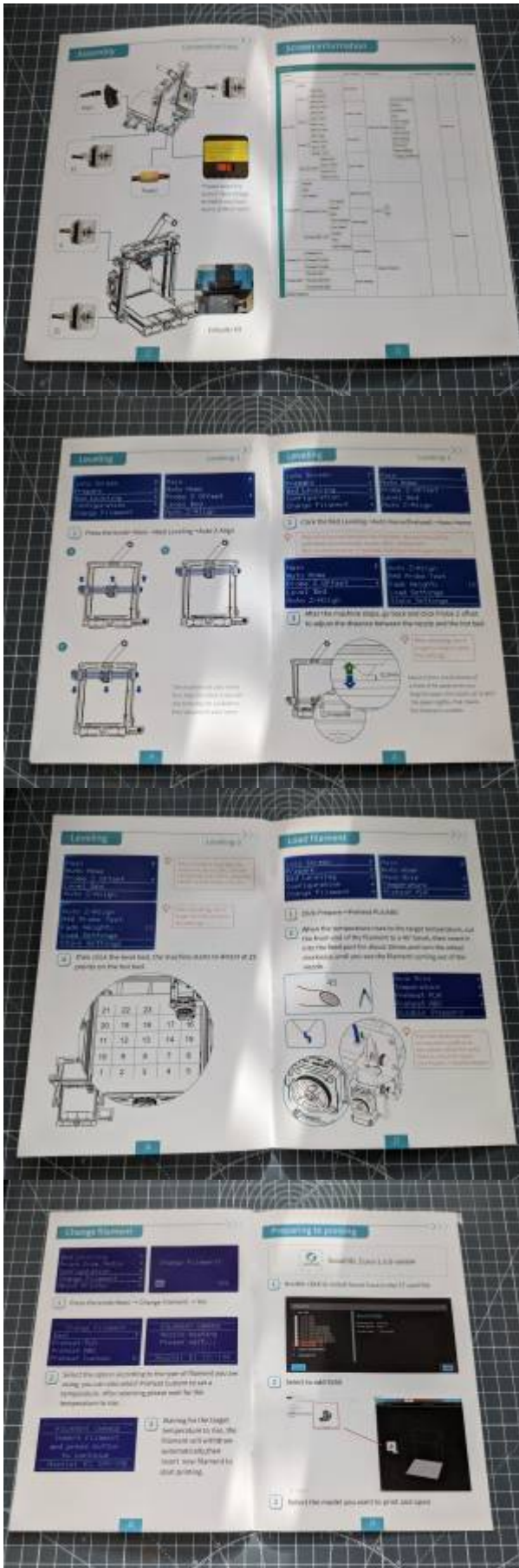




Handbuch









From: <https://finest-plastics.cybercowboy.de/> - **Finest Plastics**

Permanent link: https://finest-plastics.cybercowboy.de/doku.php?id=printer:sovol_sv06:sovol_sv06&rev=1673823943

Last update: **2023/01/15 23:05**

